

- 75.0 MHz IF SAW Filter / 9.35 MHz Bandwidth
- Revision 0: 01 Apr. 2011

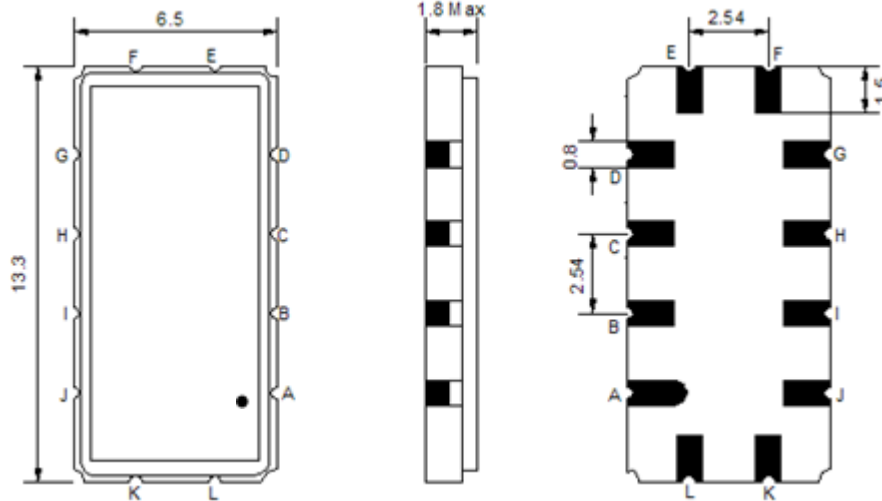
## Electrical Characteristics

MAXIMUM RATING				
PARAMETERS DESCRIPTION	UNIT	MINIMUM	TYPICAL	MAXIMUM
Operation Temperature Range	°C	-	25	-
Storage Temperature Range	°C	-40	-	85
Maximum DC Voltage	V	-	-	10
Maximum Input Power	dBm	-	-	10
Source Impedance (single ended) <sup>(1)</sup>	Ω	-	50	-
Load Impedance (single ended) <sup>(1)</sup>	Ω	-	50	-
Package type & size	V			
Length x Width	mm <sup>2</sup>	-	13.3 x 6.5	-
Height	mm	-	-	1.8

ELECTRICAL SPECIFICATION				
PARAMETERS DESCRIPTION	UNIT	MINIMUM	TYPICAL	MAXIMUM
Center Frequency (Fo)	MHz	-	75.00	-
Insertion Loss at Fo	dB	-	24.00	26.00
Group Delay Variation at Fo ± 4.50 MHz	nsec	-	48	90
Absolute Delay at Fo	usec	-	1.73	-
Passband Ripple Variation at Fo ± 4.50 MHz	dB	-	0.70	-
Bandwidth at -1dB	MHz	-	9.35	-
Bandwidth at -3dB	MHz	-	9.65	-
Bandwidth at -40dB	MHz	-	10.89	-
Ultimate Rejection	dB	-	42	-
Attenuation at Fo ±5.20 MHz	dB	-	15	-
Temperature Coefficient	ppm/°C	-	-20	-

**Notes :** (1) With Matching Network (Ref. Testing Environment Circuit as shown below).  
Those impedances could be modified with different impedance values and/or structures, if necessary.

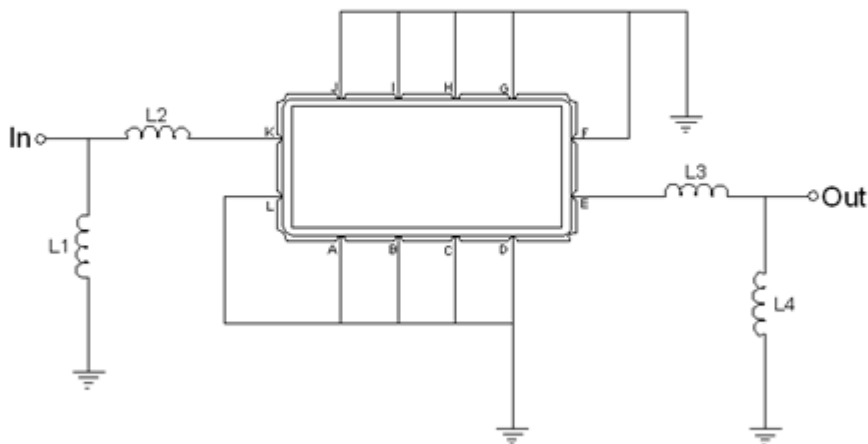
## Package Dimensions



- ① **TRANSKO:** Brand
- ② **TA07509B:** Model Name
- ③ **X :** Date Code (Year)
- ④ **Y :** Date Code (Month)
- ⑤ **Z :** Date Code (Date)
- : Index Dot

Pin Description	
A, B, C, D, F, G, H, I, J, L	Ground
K	Input
E	Output

## Testing Environment

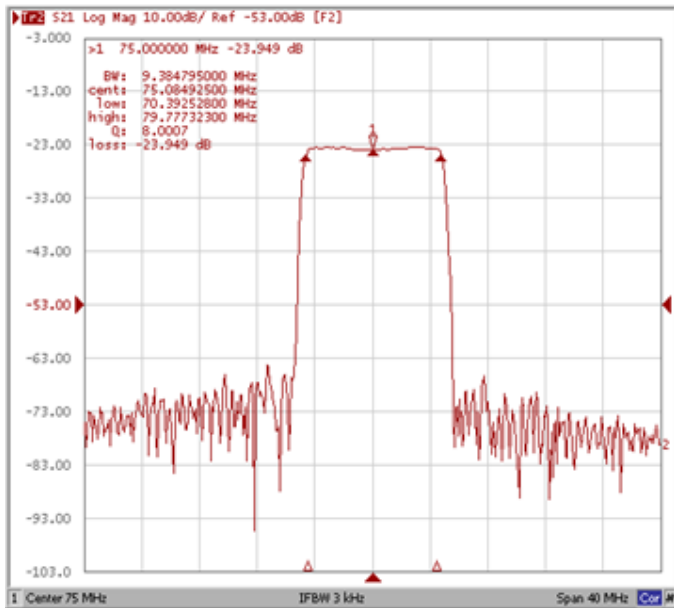


Test Fixture & Values	
<b>Input</b>	L1 = 150nH, L2=150nH
<b>Output</b>	L3 = 39nH, L4=100nH
<b>Source/Load Impedance</b>	50 Ω

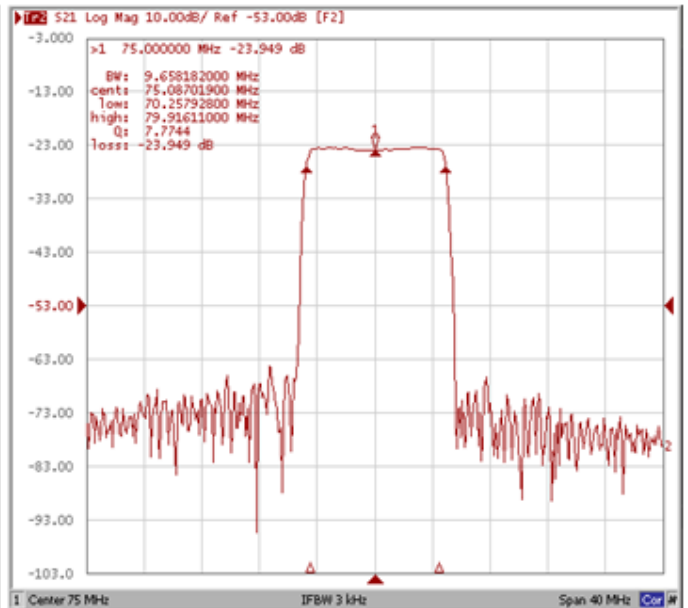
## Frequency Characteristics

### Frequency Response

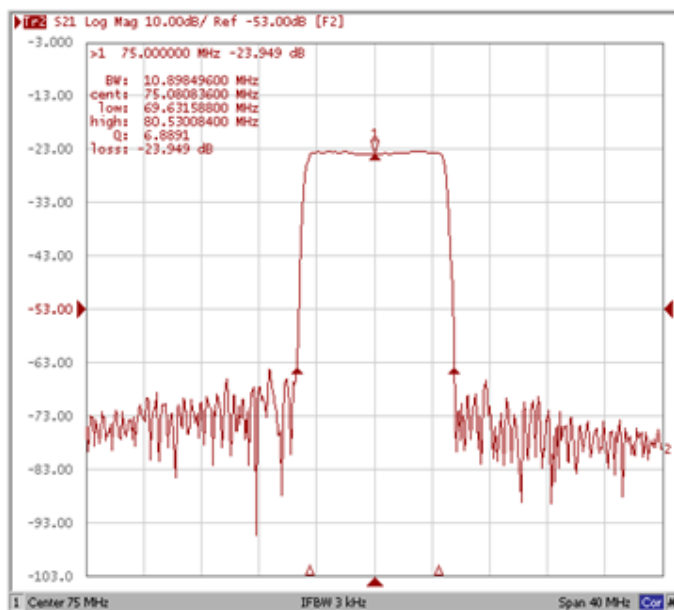
**Bandwidth at -1.0 dB**



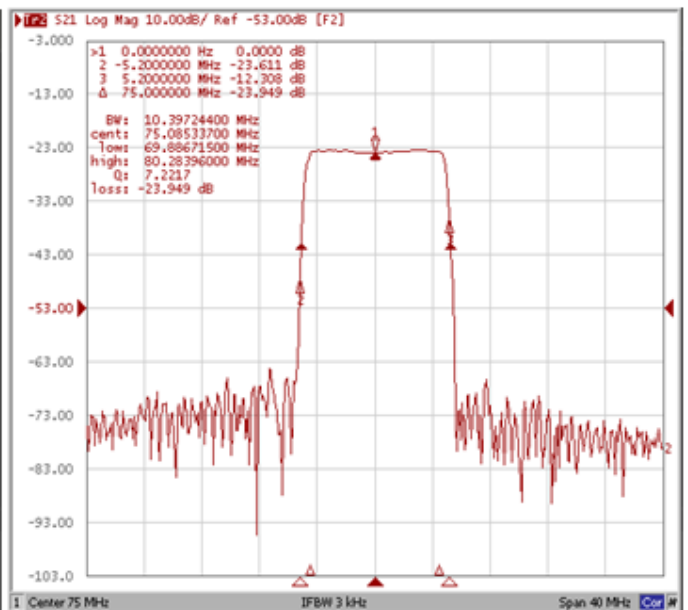
**Bandwidth at -3.0 dB**



**Bandwidth at -40.0 dB**



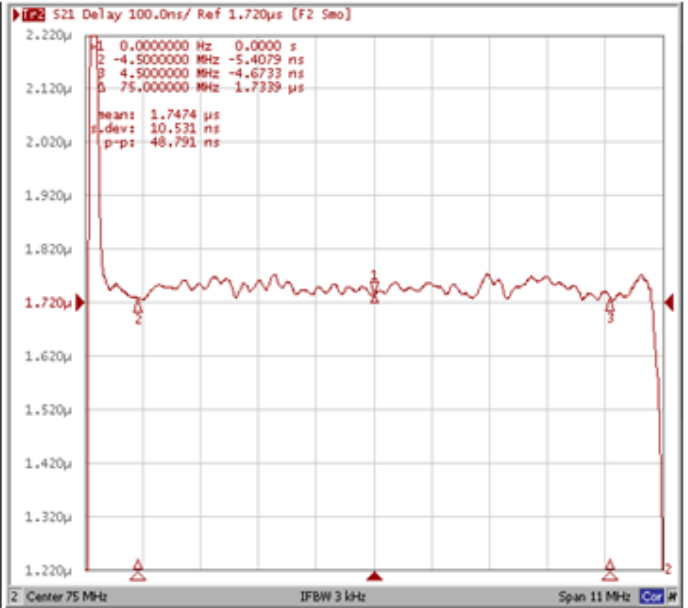
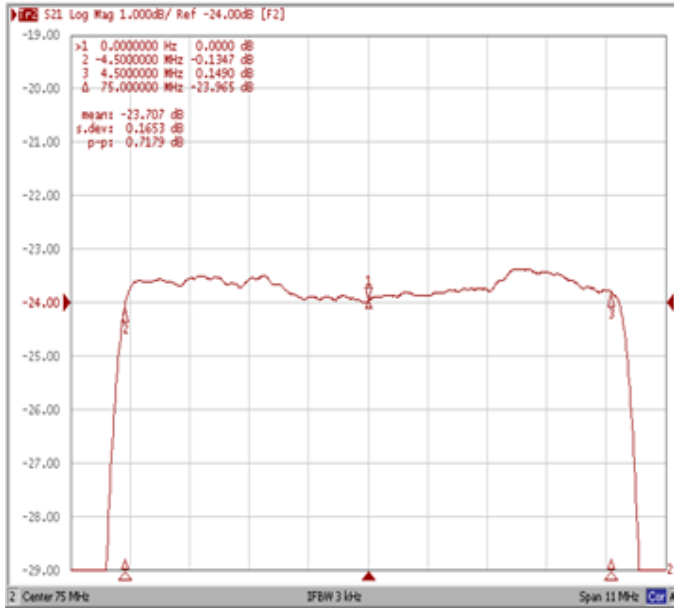
**Attenuation Fo±5.20MHz**



**Frequency Response**

**Ripple Variation Fo±4.50MHz**

**Group Delay Variation Fo±4.50MHz**



**Smith Chart**

**VSWR**

